

METHOD

Open Access



# Perfectly matched 20-nucleotide guide RNA sequences enable robust genome editing using high-fidelity SpCas9 nucleases

Dingbo Zhang<sup>1,2†</sup>, Huawei Zhang<sup>1†</sup>, Tingdong Li<sup>1,2</sup>, Kunling Chen<sup>1</sup>, Jin-Long Qiu<sup>3</sup> and Caixia Gao<sup>1\*</sup>

## Abstract

High-fidelity SpCas9 variants (eSpCas9 and SpCas9-HF1) have been engineered to reduce off-target effects. We found that changes in guide RNA length induced significant reductions in the editing activities of SpCas9 variants in plant cells. Single guide RNAs harboring precise, perfectly matched 20-nucleotide guide sequences are necessary for high on-target editing activities of eSpCas9 and SpCas9-HF1. Precise 20-nucleotide guide sequences derived from tRNA-sgRNA precursors enable robust on-target editing by these variants with enhanced specificity. Our work reveals an effective way of enhancing the use of the high-fidelity SpCas9 nucleases for efficient and precise genome engineering.

## Background

The CRISPR-Cas9 system recognizes genomic sites via Watson-Crick base pairing by virtue of 20-nucleotide (nt) guide sequences in the guide RNAs (gRNAs) that direct Cas9 for targeted cleavage [1–4]. The CRISPR-Cas9 methodology is revolutionizing genome engineering and genetic therapy [5, 6]. However, Cas9 can also target DNA sequences that harbor one or multiple mismatches with gRNAs. Off-target effects are a serious concern in CRISPR-Cas9-mediated editing [7–9] and substantial efforts are consequently being made to minimize these [10–17]. Recently, three high-fidelity *Streptococcus pyogenes* Cas9 (SpCas9) variants, eSpCas9(1.0), eSpCas9(1.1), and SpCas9-HF1, were rationally engineered by amino acid substitutions to reduce non-specific interactions with its target DNA [18, 19]. While reducing non-specific DNA recognition, both eSpCas9 and SpCas9-HF1 maintain the efficacy of on-target cleavage. Nonetheless, a mismatched G at the 5' end and truncation of the single-guide RNA (sgRNA) were noticed to reduce the nuclease activity of SpCas9-HF1 [19]. Therefore, it is important to identify the characteristics of sgRNAs that optimize the nuclease activities of these high-fidelity SpCas9 variants.

Here, we evaluated the efficiency and specificity of eSpCas9 and SpCas9-HF1 in plant genome editing processes, and found that precise perfectly matched 20-nt guide sequences could ensure the high efficiencies of these SpCas9 variants and maintain their high fidelity.

## Results

We first tested the activities of the three SpCas9 variants on seven different genomic sites in rice protoplasts (Additional file 1: Table S1). The coding sequences of eSpCas9(1.0), eSpCas9(1.1), and SpCas9-HF1 were cloned into pJIT163 under the control of the maize *Ubiquitin 1* promoter (Additional file 2: Sequences). These constructs were independently transformed into rice protoplasts together with each of the seven OsU3:sgRNA constructs [20]. **Because transcripts made under the control of the eukaryotic U3 and U6 promoters generally start with an adenine (A) or guanine (G), the 5' ends of the mature sgRNAs carry an A or G which may not match the target sequences.** Therefore, for those target sites with an A or G at their 5' ends, we designed the guide sequences of sgRNAs with a 19-nt ( $N_{19}$ ) sequence beside this A or G, followed by the PAM (protospacer adjacent motif), so that the sequences of the mature sgRNA would be  $AN_{19}$  or  $GN_{19}$ . We also designed 20-nt ( $N_{20}$ ) guide sequences so that the mature sgRNA guide sequence would be  $AN_{20}$  or  $GN_{20}$  (Fig. 1a; Additional file 1: Figure S1). Hence, for sites 1 to 5 in Fig. 1, which do not start with an A, the guide

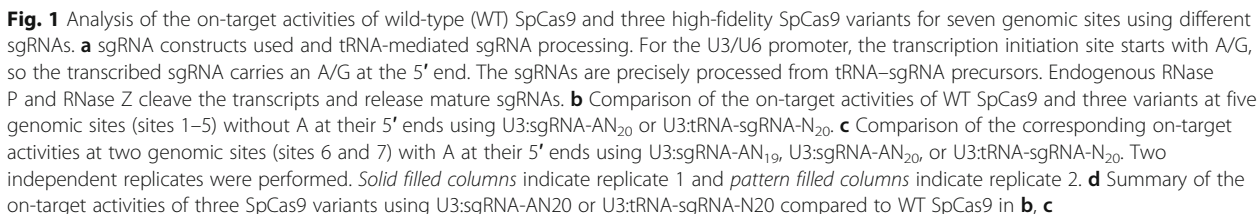
\* Correspondence: cxgao@genetics.ac.cn

†Equal contributors

<sup>1</sup>State Key Laboratory of Plant Cell and Chromosome Engineering, and Center for Genome Editing, Institute of Genetics and Developmental Biology, Chinese Academy of Sciences, Beijing, China

Full list of author information is available at the end of the article





Two days after protoplast transfection, deep amplicon sequencing was performed to determine the frequencies of on-target indels (insertions and deletions). As shown in Fig. 1 and Additional file 1: Table S2, wild-type (WT) SpCas9 exhibited high on-target activity (3–20%) for all

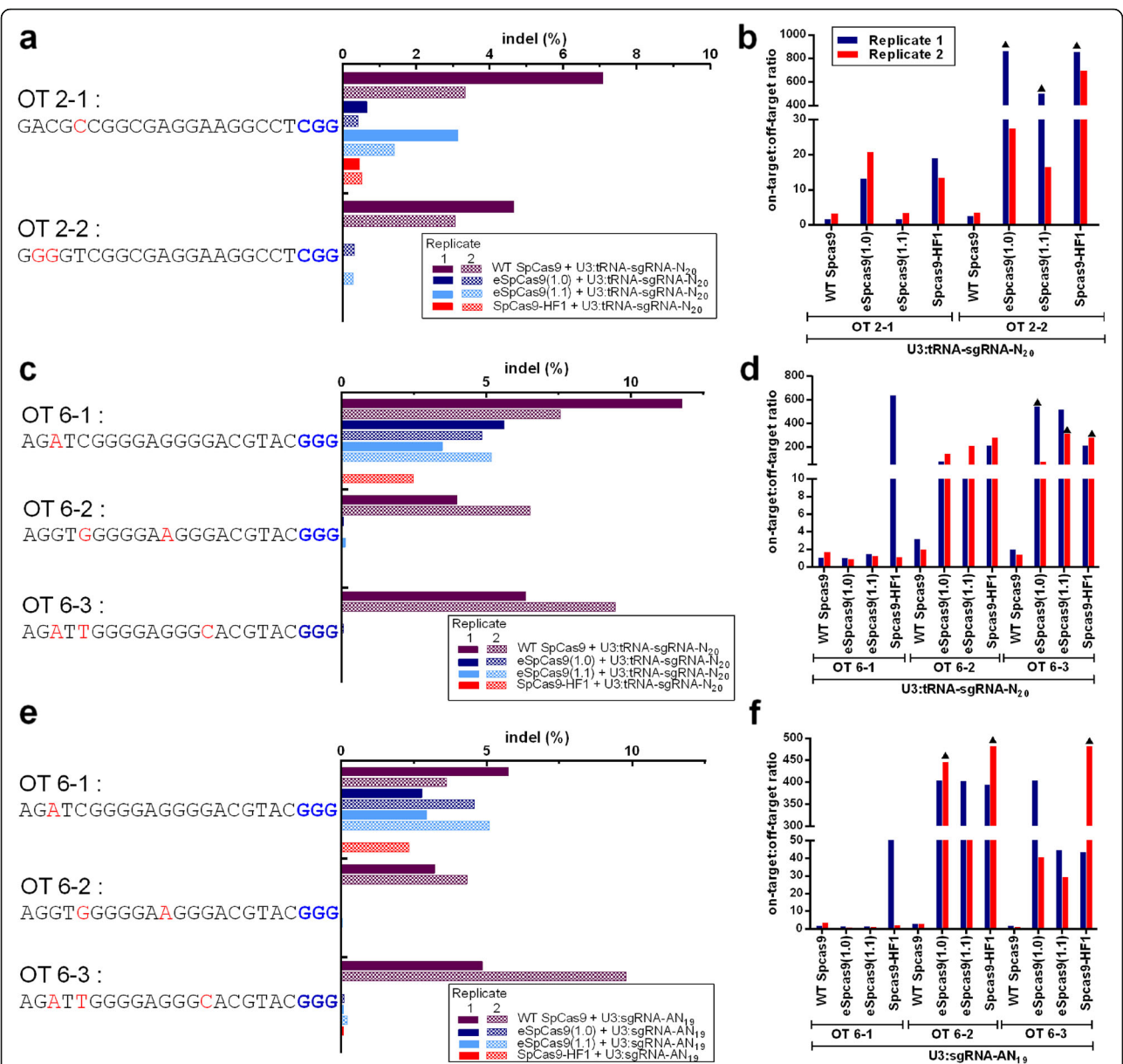
seven sites. Surprisingly, the on-target activities of the three SpCas9 variants were considerably lower. For sites 1 to 5, they were almost negligible for SpCas9-HF1, and for eSpCas9(1.0) and eSpCas9(1.1) they were still much lower than for WT SpCas9 (Fig. 1b). For sites 6 and 7, however, the three variants exhibited 40% or more of the on-target activities observed with WT SpCas9 (Fig. 1c). These data suggest that an extra adenine at the 5' end of an sgRNA-AN<sub>20</sub> sequence reduced the on-target activities of the three SpCas9 variants, whether or not the extra A matched (site 4) or did not match (sites 1, 2, 3, 5) the target DNA sequence (Fig. 1d). To test this idea, we introduced an extra adenine at the 5' ends of the sgRNAs targeting sites 6 and 7 (Fig. 1c). As expected, the SpCas9 variants, when used with a sgRNA-AN<sub>20</sub> sequence, had significantly reduced on-target cleavage activities, even though in the case of site 6, at least, the AN<sub>20</sub> sequence was precisely complementary to the genomic sequence (Fig. 1c).

Like the U3 promoter, the U6 promoter is widely used to drive sgRNA expression [21]. We investigated whether the on-target activities of eSpCas9(1.0), eSpCas9(1.1), and SpCas9-HF1 were also compromised by the 21-nt guide sequence of sgRNAs transcribed by the U6 promoter. For this purpose we selected site 4, which has a G at its 5' end (Fig. 1b), and used two sgRNA constructs driven by the U6 promoter of wheat, U6:sgRNA-GN<sub>19</sub> (producing a precisely matching 20-nt sgRNA) and U6:sgRNA-GN<sub>20</sub> (producing a 21-nt sgRNA due to an extra G at the 5' end). The three SpCas9 variants induced similar numbers of on-target changes to WT SpCas9 with U6:sgRNA-GN<sub>19</sub> but much reduced numbers when U6:sgRNA-GN<sub>20</sub> was used (Additional file 1: Figure S2), further supporting the idea that an extra nucleotide at the 5' end of the guide sequence compromises the on-target activities of the three variants. Together, these data confirm that the three SpCas9 variants have a stringent requirement for sgRNAs of precisely 20 nt for efficient on-target editing.

The above data encouraged us to seek an efficient way to generate sgRNAs of the exact length needed for the SpCas9 variants, in order to enhance their utility. Previous studies have shown that the endogenous tRNA-processing system can be harnessed to produce sgRNAs with precisely controlled guide sequences [22]. Once transcribed, the tRNA-sgRNA precursor can be efficiently processed by the cellular enzymes RNase P and RNase Z at predefined sites (Fig. 1a), producing 20-nt guide sequences completely complementary to the target sites. We therefore generated U3:tRNA-sgRNA constructs for sites 1 to 7 (Fig. 1a) and assessed their on-target cleavage activities when used with eSpCas9(1.0), eSpCas9(1.1), and SpCas9-HF1 (Fig. 1b–d). As expected, the variant SpCas9 enzymes and WT SpCas9 had similar nuclease activities with the sgRNAs produced from the tRNA-sgRNA precursors (Fig. 1b–d). For sites 1–5, the on-target activities of these

variants were much higher than with the 21-nt guide sequences of sgRNAs generated without the tRNA-sgRNA expression system (Fig. 1b). The improvement was generally much greater for eSpCas9(1.1) and SpCas9-HF1 than for eSpCas9(1.0), and for sites 1, 3, 4, and 5, the on-target activities of eSpCas9(1.1) and SpCas9-HF1 were close to, or even higher than, those of WT SpCas9 (Fig. 1b). The on-target activity of WT SpCas9 was also increased, but the extent of the increase was much less (Fig. 1b). For sites 6 and 7, the on-target activities of the three variants with the sgRNAs produced from U3:tRNA-sgRNA constructs were comparable to those obtained with the sgRNAs-AN<sub>19</sub> (Fig. 1c). These results further demonstrate that a perfectly matched 20-nt guide sequence is needed for optimal nuclease activities of eSpCas9(1.0), eSpCas9(1.1), and SpCas9-HF1. We propose that synthetic genes with a tRNA-sgRNA architecture provide a general strategy for producing sgRNAs with perfectly matched 20-nt sequences for use with the high-fidelity SpCas9 variants.

It has been shown that the amounts of U3 promoter-derived sgRNA transcripts are greater with synthetic tRNA-sgRNA genes compared to those from sgRNA alone [22]. This phenomenon was also apparent in an analysis using sites 2 and 6 as representatives (Additional file 1: Figure S3). Although the increased sgRNA abundance may be beneficial for the on-target activities of the three SpCas9 variants, it seemed possible that it would also stimulate off-target activities. This prompted us to examine the off-target editing activities of eSpCas9(1.0), eSpCas9(1.1), and SpCas9-HF1 with the sgRNAs produced from U3:tRNA-sgRNA constructs. Two off-targets of site 2 (OT2-1 and OT2-2) and three off-targets of site 6 (OT6-1, OT6-2, and OT6-3) were used in these experiments (Fig. 2). In general, the three SpCas9 variants had substantially less off-target activity than WT SpCas9, and this was particularly evident for OT2-2, OT6-2, and OT6-3 (Fig. 2a–d). SpCas9-HF1 consistently exhibited the lowest off-target activities at the five examined sites (Fig. 2a–d). The amounts of off-target activity obtained with U3:tRNA-sgRNA-N<sub>20</sub> and U3:sgRNA-AN<sub>19</sub> were similar (Fig. 2c–f). In addition, the on-target:off-target indel frequency ratios for the three SpCas9 variants were, on average, 273-fold higher than those for WT SpCas9 (Fig. 2b, d, f; Additional file 1: Table S2). Thus, the SpCas9 variants retained their high degree of specificity when used with guides produced from tRNA-sgRNA constructs. The off-target activities of the three SpCas9 variants were also investigated by systematically mutating the guide sequence of site 2 and checking the effects on editing of site 2 (Fig. 3). Pairs of mismatches were introduced at successive positions along the guide sequence and the resulting mutants were each fused with tRNA, the tRNA-sgRNA being transcribed under the U3 promoter. Compared with WT SpCas9, the three SpCas9 variants consistently induced much lower levels of indels



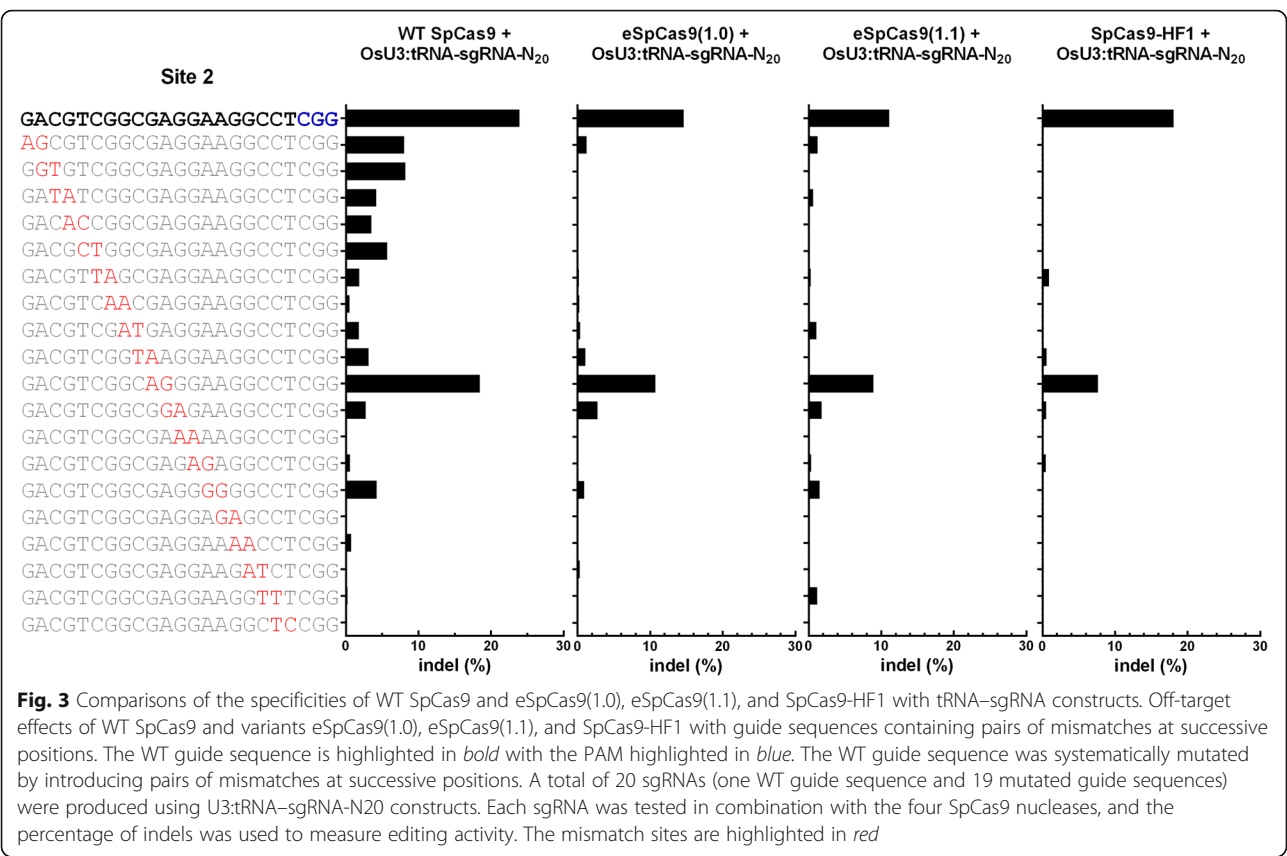
**Fig. 2** Comparisons of the off-target editing activities of WT SpCas9 and three high-fidelity SpCas9 variants at five off-target sites with sgRNAs produced from U3:tRNA-sgRNA constructs and U3:sgRNA constructs. **a, c, e** Activities of WT SpCas9, eSpCas9(1.0), eSpCas9(1.1), and SpCas9-HF1 for the two off-targets of site 2 (OT2-1 and OT2-2) and the three off-targets of site 6 (OT6-1, OT6-2, and OT6-3) using sgRNAs produced from U3:tRNA-sgRNA constructs (**a** and **c**) and for the three off-targets of site 6 with sgRNAs produced from U3:sgRNA-AN<sub>19</sub> constructs (**e**). The off-targets had one (OT2-1 and OT6-1), two (OT2-2 and OT6-2), and three (OT6-3) mismatches (highlighted in red) to sites 2 and 6, respectively. The PAM is shown in blue. The percentage of indels was used to measure off-target editing activity. Two independent replicates were performed. Solid filled columns indicate replicate 1 and pattern filled columns indicate replicate 2. **b, d, f** Specificities of WT SpCas9, eSpCas9(1.0), eSpCas9(1.1), and SpCas9-HF1 represented as on-target:off-target indel frequency ratios. On-target:off-target ratios were calculated by dividing the on-target indel frequency by the off-target frequency. When off-target activity was undetectable (the threshold of detection was 0.01% of sequencing reads), we set the off-target efficiency to the threshold of detection (0.01%) and these cases are denoted by a triangle

with the mutant sgRNAs (Fig. 3). Collectively, the results of this series of experiments indicate that the three variant enzymes coupled with 20-nt sgRNA using tRNA-sgRNA fusions still possess high fidelity.

### Discussion

The specificity of Cas9 is of fundamental importance for its application. Double strand breaks (DSBs) induced at off-target sites can trigger cellular damage, and the repair





of DSBs at off-target sites by non-homologous end joining (NHEJ) or homology-directed repair (HDR) may also cause unwanted mutations. Several strategies have been developed to improve the specificity of SpCas9, such as using computational tools to design the guide RNAs [23, 24], improving off-target detection methods [25–29], protein engineering [10–14, 16–19], modifying the guide RNAs [14, 15], and delivering purified Cas9 ribonucleoproteins (RNPs) into cells [30, 31]. The high-fidelity SpCas9 variants eSpCas9 and SpCas9-HF1, which were obtained by protein engineering, display extremely high specificity in mammalian cells.

In this study, we observed that both eSpCas9 and SpCas9-HF1 had stricter requirements concerning sgRNA guide sequences than WT SpCas9. When additional matched or mismatched residues were added to the 5' end of N<sub>20</sub> sgRNAs, the on-target activities of the high-fidelity SpCas9 variants decreased dramatically. However, when we used a tRNA-sgRNA expression system to produce precise N<sub>20</sub> guide RNAs, the on-target activity of the SpCas9 variants was restored and could even be higher than that of WT SpCas9. In agreement with previous research, we found that eSpCas9 and SpCas9-HF1 exhibited high specificity and SpCas9-HF1 barely introduced any indels, especially at off-target sites with two or more mismatches. Since the tRNA-sgRNA architecture has been

demonstrated to work well in *Drosophila* [32], we believe that our strategy can also work in beneficial ways in mammalian cells, and this will be tested in our future work.

The feasibility of our strategy has been proven in rice protoplasts. Next, we will use this strategy to generate mutant plants and compare the specificities of WT SpCas9 and the high-fidelity SpCas9 variants. An unbiased approach over the whole genome assessing off-target effects will be required to do this. In addition, knowledge of their crystal structures and enzyme kinetics might be helpful. Recent studies indicate that the type V CRISPR system nuclease Cpf1 is a highly specific RNA-guided endonuclease [33, 34]. It will be of interest to compare the genome-wide specificities of Cpf1 and eSpCas9/SpCas9-HF1. It has been reported that the high-fidelity base editor HF-BE3 [35], in which SpCas9-HF1 (containing the substitution D10A) is fused to cytidine deaminase and UGI, has greatly enhanced specificity. Hence, we believe that a fusion of eSpCas9 with cytidine deaminase and UGI could also have increased specificity.

### Conclusions

We have shown that producing sgRNAs intracellularly from tRNA-sgRNA transcripts increases the on-target activities of the high-specificity SpCas9 variants without sacrificing their high specificity. This approach should enhance the utility of these variant enzymes for efficient

and precise genome engineering. We also believe that other means of accurately generating sgRNAs, e.g., using self-cleaving HDV and HH ribozymes or the endoribonuclease Csy4 [36, 37], could improve the on-target editing activity of these spCas9 variants without sacrificing their high specificity.

## Methods

### Plasmids

pJIT163-Ubi-2XNLS-Cas9 is a plasmid used in our previous study [20]. Point mutations were introduced to the coding sequence of SpCas9 with the Fast MultiSite Mutagenesis System (TransGen Biotech, Beijing, China), resulting in alternative expression cassettes producing eSpCas9(1.0) (K810A, K1003A, R1060A), eSpCas9(1.1) (K848A, K1003A, R1060A), or SpCas9-HF1 (N497A, R661A, Q695A, Q926A). OsU3:sgRNA and TaU6:sgRNA constructs were made using our published protocol [38]. Following the previous report, a generic tRNA-sgRNA cassette containing two FokI restriction sites was constructed [22], which was then employed to prepare the various tRNA-sgRNA constructs used in this work. The oligonucleotide primers used in this work are listed in Additional file 1: Tables S1, S3, and S4.

### Protoplast transfection

Rice cultivar Nipponbare was used throughout this work. Preparation of protoplasts from 2-week-old seedlings and transformation of the resultant protoplasts with desirable plasmid constructs were conducted as reported previously [20]. The average transformation efficiency of protoplasts was higher than 50%. In each transformation, the appropriate Cas9 and sgRNA constructs (10 µg each) were mixed and co-delivered into the protoplasts via PEG-mediated transfection.

### DNA extraction

The transfected protoplasts were incubated at 23 °C. After 48 h of incubation, they were harvested for genomic DNA extraction using the DNA quick Plant System (TIANGEN BIOTECH, Beijing, China). The targeted site was amplified by specific primers, with amplicons purified using the EasyPure PCR Purification Kit (TransGen Biotech, Beijing, China), and quantified with a NanoDrop™ 2000 Spectrophotometer (Thermo Fisher Scientific, Waltham, MA, USA).

### Off-target detection

Off-target detection was based on predictions using the online tool CRISPR-P [39] and previous research data [40]. The off-target sites for sites 2 and 6 in the rice genome were identified and verified in this work.

### RNA extraction and quantitative RT-PCR analysis of sgRNA expression

Total RNA samples were prepared from transfected rice protoplasts using the TRIzol reagent (Life Technologies, Carlsbad, CA, USA). After treatment with RNase-free DNase I (Life Technologies, Carlsbad, CA, USA), the samples were stored at -80 °C until use. For quantitative RT-PCR, an aliquot of the total RNA (2 µg) was reverse transcribed into cDNA using oligo dT and sgRNA specificity primer (Additional file 1: Table S4) and M-MLV reverse transcriptase (Promega, Madison, WI, USA) following the manufacturer's instruction. The qRT-PCR was then performed using SsoFast EvaGreen Supermix (Bio-Rad, Foster City, CA, USA) in a CFX 384 Touch Real-Time RCR Detection System (Bio-Rad, Foster City, CA, USA) to measure sgRNA expression level. The rice Ubiquitin gene (*LOC\_Os02g06640*) was used as an internal control for quantitative RT-PCR [22].

### Deep amplicon sequencing

Specific primers were used to amplify the genomic regions flanking the CRISPR target site in the first round PCR. The resultant PCR products were subjected to a second round PCR, with forward and reverse barcodes added to the products. Primers are listed in Additional file 1: Table S5. Equal amounts of final PCR products were mixed and pooled for library construction. Then the libraries were sequenced commercially (Mega Genomics, Beijing, China) by paired-end read sequencing using the Illumina NextSeq 500 platform. The indels detected inside the target site were considered as evidence of mutagenesis [41, 42].

### Additional file

**Additional file 1: Figure S1.** Complete DNA sequences of the sgRNA expression constructs. **Figure S2.** Comparison of the on-target activities of WT SpCas9 and its variants. **Figure S3.** The relative expression levels of the sgRNAs produced from two types of sgRNA constructs. **Table S1.** Target sequences and oligos used to construct sgRNA expression vectors. **Table S2.** Indel frequencies revealed by deep amplicon sequencing. **Table S3.** Oligos used to construct vectors of sgRNA with mismatches. **Table S4.** PCR primers used in this study. **Table S5.** Second round PCR primers with barcodes for deep amplicon sequencing. (PDF 766 kb)

**Additional file 2:** Rice codon optimized DNA sequences of WT Cas9, eSpCas9(1.0), eSpCas9(1.1), and SpCas9-HF1. (PDF 296 kb)

### Acknowledgements

The authors thank Prof. Daowen Wang for critical reading and editing of the manuscript.

### Funding

This work was supported by grants from the National Transgenic Science and Technology Program (2016ZX08010-002), the National Key Research and Development Program of China (2016YFD0101804), the Chinese Academy of Sciences (QYDZ-SSW-SMC030 and GJHZ1602), and the National Natural Science Foundation of China (31420103912, 31501376, and 31570369).

### Availability of data and materials

Deep sequencing data are available under BioProject ID: PRJNA408192.

**Authors' contributions**

DZ and HZ designed the experiments; DZ, HZ, TL, and KC performed the experiments; CG and JQ supervised the project; DZ analyzed the results; HZ, JQ, and CG wrote the manuscript. All authors read and approved the final manuscript.

**Ethics approval and consent to participate**

Ethics approval was not needed for the study.

**Competing interests**

The authors have submitted a patent application (application number 201710089494.9) based on the results reported in this paper.

**Publisher's Note**

Springer Nature remains neutral with regard to jurisdictional claims in published maps and institutional affiliations.

**Author details**

<sup>1</sup>State Key Laboratory of Plant Cell and Chromosome Engineering, and Center for Genome Editing, Institute of Genetics and Developmental Biology, Chinese Academy of Sciences, Beijing, China. <sup>2</sup>University of Chinese Academy of Sciences, Beijing, China. <sup>3</sup>State Key Laboratory of Plant Genomics, Institute of Microbiology, Chinese Academy of Sciences, Beijing, China.

Received: 23 June 2017 Accepted: 24 September 2017

Published online: 11 October 2017

**References**

- Jinek M, Chylinski K, Fonfara I, Hauer M, Doudna JA, Charpentier E. A programmable dual-RNA-guided DNA endonuclease in adaptive bacterial immunity. *Science*. 2012;337:816–21.
- Cong L, Ran FA, Cox D, Lin SL, Barretto R, Habib N, et al. Multiplex Genome Engineering Using CRISPR/Cas Systems. *Science*. 2013;339:819–23.
- Mali P, Yang L, Esvelt KM, Aach J, Guell M, DiCarlo JE, et al. RNA-guided human genome engineering via Cas9. *Science*. 2013;339:823–6.
- Cho SW, Kim S, Kim JM, Kim JS. Targeted genome engineering in human cells with the Cas9 RNA-guided endonuclease. *Nat Biotechnol*. 2013;31:230–2.
- Hsu PD, Lander ES, Zhang F. Development and applications of CRISPR-Cas9 for genome engineering. *Cell*. 2014;157:1262–78.
- Voytas DF, Gao C. Precision genome engineering and agriculture: opportunities and regulatory challenges. *PLoS Biol*. 2014;12:e1001877.
- Fu Y, Foden JA, Khayter C, Maeder ML, Reyon D, Joung JK, et al. High-frequency off-target mutagenesis induced by CRISPR-Cas nucleases in human cells. *Nat Biotechnol*. 2013;31:822–6.
- Hsu PD, Scott DA, Weinstein JA, Ran FA, Konermann S, Agarwala V, et al. DNA targeting specificity of RNA-guided Cas9 nucleases. *Nat Biotechnol*. 2013;31:827–32.
- Pattanayak V, Lin S, Guilinger JP, Ma E, Doudna JA, Liu DR. High-throughput profiling of off-target DNA cleavage reveals RNA-programmed Cas9 nuclease specificity. *Nat Biotechnol*. 2013;31:839–43.
- Tsai SQ, Wyvekens N, Khayter C, Foden JA, Thapar V, Reyon D, et al. Dimeric CRISPR RNA-guided FokI nucleases for highly specific genome editing. *Nat Biotechnol*. 2014;32:569–76.
- Guilinger JP, Thompson DB, Liu DR. Fusion of catalytically inactive Cas9 to FokI nuclease improves the specificity of genome modification. *Nat Biotechnol*. 2014;32:577–82.
- Mali P, Aach J, Stranges PB, Esvelt KM, Moosburner M, Kosuri S, et al. Cas9 transcriptional activators for target specificity screening and paired nickases for cooperative genome engineering. *Nat Biotechnol*. 2013;31:833–8.
- Ran FA, Hsu PD, Lin CY, Gootenberg JS, Konermann S, Trevino AE, et al. Double nicking by RNA-guided CRISPR Cas9 for enhanced genome editing specificity. *Cell*. 2013;154:1380–9.
- Cho SW, Kim S, Kim Y, Kweon J, Kim HS, Bae S, et al. Analysis of off-target effects of CRISPR/Cas-derived RNA-guided endonucleases and nickases. *Genome Res*. 2014;24:132–41.
- Fu Y, Sander JD, Reyon D, Cascio VM, Joung JK. Improving CRISPR-Cas nuclease specificity using truncated guide RNAs. *Nat Biotechnol*. 2014;32:279–84.
- Zetsche B, Volz SE, Zhang F. A split-Cas9 architecture for inducible genome editing and transcription modulation. *Nat Biotechnol*. 2015;33:139–42.
- Davis KM, Pattanayak V, Thompson DB, Zuris JA, Liu DR. Small molecule-triggered Cas9 protein with improved genome-editing specificity. *Nat Chem Biol*. 2015;11:316–8.
- Slaymaker IM, Gao L, Zetsche B, Scott DA, Yan WX, Zhang F. Rationally engineered Cas9 nucleases with improved specificity. *Science*. 2016;351:84–8.
- Kleinstiver BP, Pattanayak V, Prew MS, Tsai SQ, Nguyen NT, Zheng Z, et al. High-fidelity CRISPR-Cas9 nucleases with no detectable genome-wide off-target effects. *Nature*. 2016;529:490–5.
- Shan QW, Wang YP, Li J, Zhang Y, Chen KL, Liang Z, et al. Targeted genome modification of crop plants using a CRISPR-Cas system. *Nat Biotechnol*. 2013;31:686–8.
- Wang Y, Cheng X, Shan Q, Zhang Y, Liu J, Gao C, et al. Simultaneous editing of three homoalleles in hexaploid bread wheat confers heritable resistance to powdery mildew. *Nat Biotechnol*. 2014;32:947–51.
- Xie K, Minkenberg B, Yang Y. Boosting CRISPR/Cas9 multiplex editing capability with the endogenous tRNA-processing system. *Proc Natl Acad Sci U S A*. 2015;112:3570–5.
- Bae S, Park J, Kim JS. Cas-OFFinder: a fast and versatile algorithm that searches for potential off-target sites of Cas9 RNA-guided endonucleases. *Bioinformatics*. 2014;30:1473–5.
- Doench JG, Hartenian E, Graham DB, Tothova Z, Hegde M, Smith I, et al. Rational design of highly active sgRNAs for CRISPR-Cas9-mediated gene inactivation. *Nat Biotechnol*. 2014;32:1262–7.
- Ran FA, Cong L, Yan WX, Scott DA, Gootenberg JS, Kriz AJ, et al. In vivo genome editing using *Staphylococcus aureus* Cas9. *Nature*. 2015;520:186–91.
- Tsai SQ, Zheng Z, Nguyen NT, Liebers M, Topkar W, Thapar V, et al. GUIDE-seq enables genome-wide profiling of off-target cleavage by CRISPR-Cas nucleases. *Nat Biotechnol*. 2015;33:187–97.
- Kim D, Bae S, Park J, Kim E, Kim S, Yu HR, et al. Digenome-seq: genome-wide profiling of CRISPR-Cas9 off-target effects in human cells. *Nat Methods*. 2015;12:237–43. 231 p following 243.
- Cameron P, Fuller CK, Donohoue PD, Jones BN, Thompson MS, Carter MM, et al. Mapping the genomic landscape of CRISPR-Cas9 cleavage. *Nat Methods*. 2017;14:600–6.
- Yan WX, Mirzazadeh R, Garnerone S, Scott D, Schneider MW, Kallas T, et al. BLISS is a versatile and quantitative method for genome-wide profiling of DNA double-strand breaks. *Nat Commun*. 2017;8:15058.
- Kim S, Kim D, Cho SW, Kim J, Kim JS. Highly efficient RNA-guided genome editing in human cells via delivery of purified Cas9 ribonucleoproteins. *Genome Res*. 2014;24:1012–1019.
- Zuris JA, Thompson DB, Shu Y, Guilinger JP, Bessen JL, Hu JH, et al. Cationic lipid-mediated delivery of proteins enables efficient protein-based genome editing in vitro and in vivo. *Nat Biotechnol*. 2015;33:73–80.
- Port F, Bullock SL. Augmenting CRISPR applications in *Drosophila* with tRNA-flanked sgRNAs. *Nat Methods*. 2016;13:852–4.
- Kim D, Kim J, Hur JK, Been KW, Yoon SH, Kim JS. Genome-wide analysis reveals specificities of Cpf1 endonucleases in human cells. *Nat Biotechnol*. 2016;34:863–8.
- Kleinstiver BP, Tsai SQ, Prew MS, Nguyen NT, Welch MM, Lopez JM, et al. Genome-wide specificities of CRISPR-Cas Cpf1 nucleases in human cells. *Nat Biotechnol*. 2016;34:869–74.
- Rees HA, Komor AC, Yeh WH, Caetano-Lopes J, Warman M, Edge ASB, et al. Improving the DNA specificity and applicability of base editing through protein engineering and protein delivery. *Nat Commun*. 2017;8:15790.
- Nowak CM, Lawson S, Zerez M, Bleris L. Guide RNA engineering for versatile Cas9 functionality. *Nucleic Acids Res*. 2016;44:9555–64.
- Cermak T, Curtin SJ, Gil-Humanes J, Cegan R, Kono TJY, Konecna E, et al. A multi-purpose toolkit to enable advanced genome engineering in plants. *Plant Cell*. 2017;29:1196–217.
- Shan Q, Wang Y, Li J, Gao C. Genome editing in rice and wheat using the CRISPR/Cas system. *Nat Protoc*. 2014;9:2395–410.
- Lei Y, Lu L, Liu HY, Li S, Xing F, Chen LL. CRISPR-P: a web tool for synthetic single-guide RNA design of CRISPR-system in plants. *Mol Plant*. 2014;7:1494–6.
- Endo M, Mikami M, Toki S. Multigene knockout utilizing off-target mutations of the CRISPR/Cas9 system in rice. *Plant Cell Physiol*. 2015;56:41–7.
- Liang Z, Chen K, Li T, Zhang Y, Wang Y, Zhao Q, et al. Efficient DNA-free genome editing of bread wheat using CRISPR/Cas9 ribonucleoprotein complexes. *Nat Commun*. 2017;8:14261.
- Zong Y, Wang Y, Li C, Zhang R, Chen K, Ran Y, et al. Precise base editing in rice, wheat and maize with a Cas9-cytidine deaminase fusion. *Nat Biotechnol*. 2017;35:438–40.